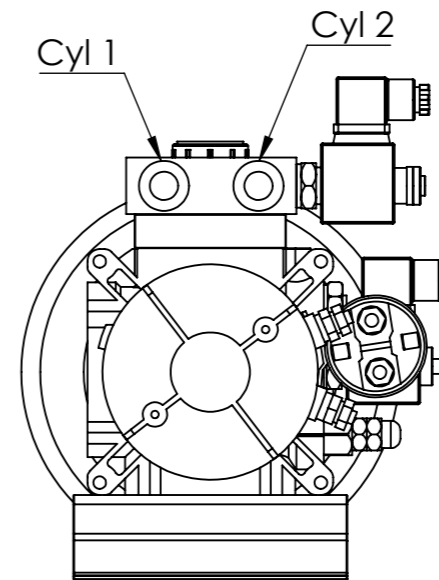
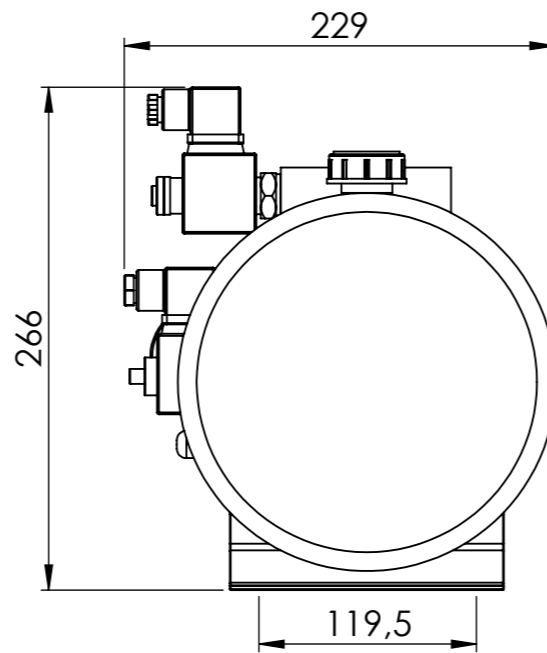
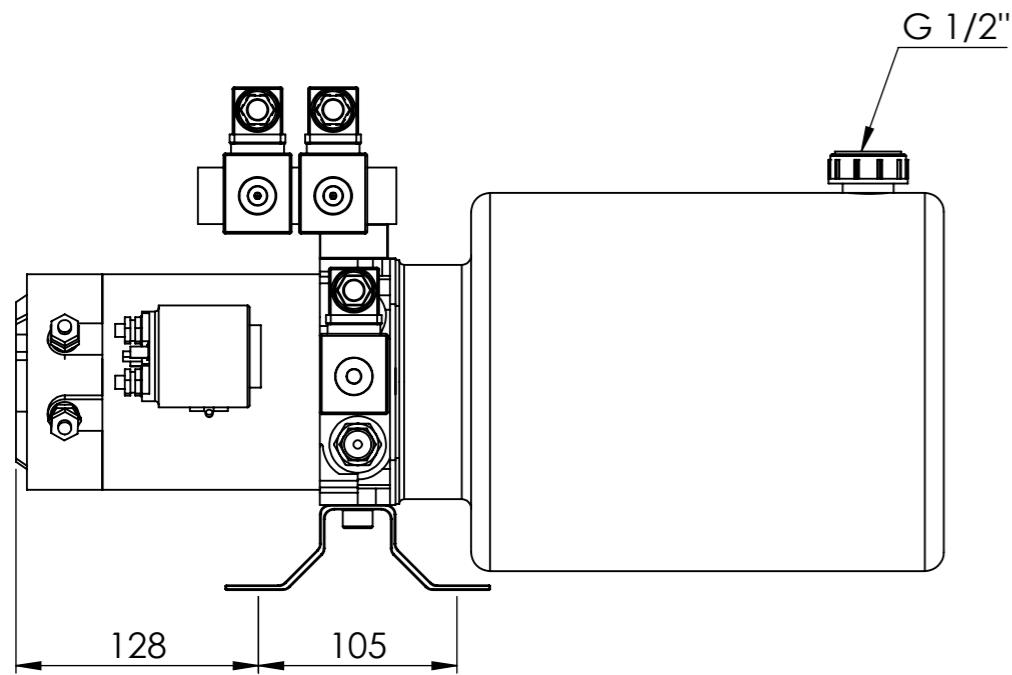
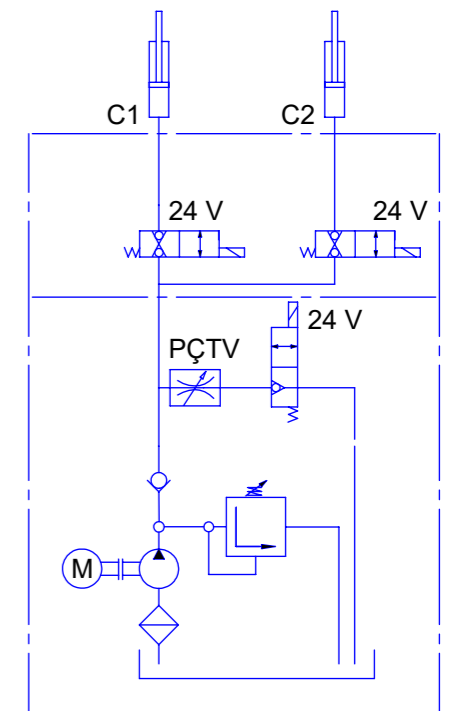


| PART NO. | PART NAME | QTY. |
|----------|-----------------------|------|
| 1 | MBWP-10 | 1 |
| 4 | Connection plate | 1 |
| 7 | Pressure relief valve | 1 |
| 8 | 10C2.1X302 | 1 |
| 9 | DC24-2.2-2500 | 1 |
| 10 | Starter | 1 |
| 13 | P-NC-24 | 1 |
| 14 | PÇTV | 1 |
| 15 | TP08Y | 1 |
| 16 | BLDOOR-SN | 1 |
| 17 | P-DL-24 | 2 |



Hydraulic Scheme

Output ports are G 3/8"



| NOTES | | | MASS | DESIGNED BY | Gürkan Yalvaç |
|-----------------------|----------------------------|------------------------|---------------------|---------------|---------------|
| ELECTRIC MOTOR | PUMP | OIL TANK | MAX PRESSURE | CHECKED BY | Halil Tarhan |
| POWER 2.2 kW | DISPLACEMENT 2,1 cc/rev | CAPACITY 8 liter | 200 bar | DATE | 25.05.2018 |
| VOLTAGE 24 V DC | | TYPE Cylinder | | REVISION | |
| SPEED 2500rpm | | ASSEMBLY Horizontal | | REVISION DATE | |
| FREQUENCY | | MATERIAL Steel | | | |

| | |
|-----------------------|----------------|
| P | |
| DESCRIPTION | |
| MINI POWERPACK | |
| SCALE: 1:5 | DIMENSIONS: mm |
| | A3 |