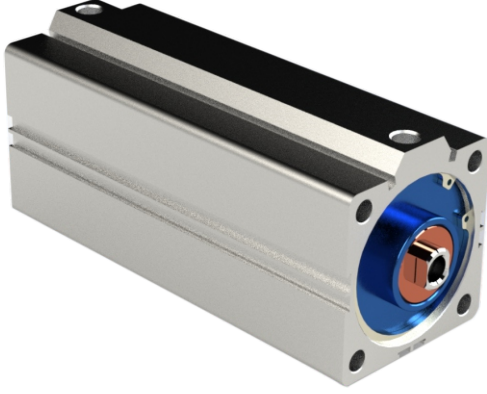


KISA TİP DÖNMEZ MİLLİ SİLİNDİR

SHORT STROK NON ROTATE PNEUMATIC CYLINDER



Sipariş Kodu / Ordering Code

SDA_N 80 50 S

Manyetik / Magnet

Strok / Stroke (mm)

Çap / Bore Size (mm)

Model / Model

Model / Model Type

Ürün Model Kodu / Product Model Code

Çap / Bore (mm)

50 - 63 - 80 - 100 mm

Strok / Stroke (mm)

5 mm - 1400 mm

Manyetik / Magnet

S: Manyetik / Magnet

Çap / Bore	Standard Type			Attach Magnet			D	E	F	G	K1	L	M	N1	N3	O
	A	B1	C	A	B1	C										
50	37	9	28	47	9	38	71.5	15	5	4	M10 x 1.5	38	2.8	10.5	-	G1/4
63	41	9	32	51	9	42	84.5	15	5	4	M10 x 1.5	40	2.8	11.8	-	G1/4
80	52	11	41	62	11	51	104	15	6	5	M10 x 1.5	45	4	14.5	-	G3/8
100	63	12	51	73	12	61	124	18	7	5	M10 x 1.5	55	4	20.5	-	G3/8

Çap / Bore	P1			P3	P4	R	S	T1	T2	U	V	W	X	Y
50	Ø 11	M8 x 1.25	Ø 6.5	25	8.5	9.5	62	48	-	4.15	20	16	30	20
63	Ø 11	M8 x 1.25	Ø 6.5	25	8.5	9.5	75	60	-	3.15	20	16	28.7	20
80	Ø 14	M12 x 1.75	Ø 9.2	25	10.5	10	94	74	-	3.65	20	16	36	26
100	Ø 17.5	M12 x 1.75	Ø 11.3	30	13	10	114	90	-	3.65	20	16	35	26

Çap / Bore	50	63	80	100
Akışkan / Fluid	Hava / Air			
Çalışma Basınç Aralığı / Working Pressure Range	1 ~ 9,0 kgf/cm ²			
Maximum Basınç Dayanımı / Max. Pressure Resistance	13,5 kgf/cm ²			
Çalışma Sıcaklık Aralığı / Working Temperature Range	0 ~ 70 °C			
Çalışma Hız Aralığı / Working Speed Range	50 ~ 800 mm/sec			
Kuvvet / Force kg (at 6 bar)	117.7	186.9	301.4	471

