



Sipariş Kodu / Ordering Code

HMSA 40 L

Dönüş Yönü / Rotation Way

Çap / Bore Size (mm)

Model / Model

Model / Model Type

Ürün Model Kodu / Product Model Code

Çap / Bore Size (mm)

25 - 32 - 40 - 50 - 63 mm

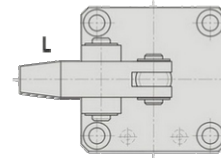
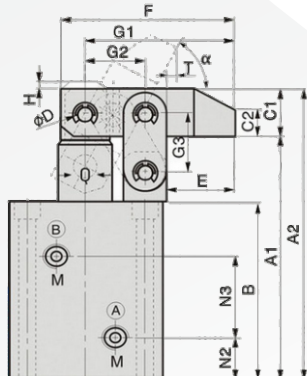
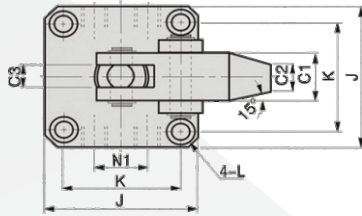
Dönüş Yönü / Rotation Way

R : Sağ - L : Sol / R: Right - L: Left



Model / Model	HMSA 25	HMSA 32	HMSA 40	HMSA 50	HMSA 63
Çalışma Sıcaklığı / Temperature °C	-10 +70 °C				
Mak.Basınç / Max. Pressure	50 kg/cm2				
Strok / Stroke (mm)	25	25	30	34	40
Güç / Clamp Force (kgf)	170,29	278,38	424,2	661,8	1005,44

Model	A1	A2	B	C1	C2	C3	D	E	F	G1	G2	G3	H	J	K	L	M	N1	N2	N3	N4	a	T
HMSA 25	103	122	76	19x19	11	9	Ø8	25	64	55	22	24	3	55	42	Ø6.8-Ø10.5*6.5D	G1/8	18	17	33	20	61°	4
HMSA 32	112	131	85	19x19	11	9	Ø8	25	64	55	22	24	3	57	44	Ø6.8-Ø10.5*6.5D	G1/8	22	19	38	22	61°	5
HMSA 40	122	144	90	22x22	13	10	Ø10	30	77	66	26	29	4	69	52	Ø9-Ø14*9D	G1/4	26	19	40	26	61°	5.5
HMSA 50	137	162	100	25x25	15	11	Ø12	35,5	90	77	30	33	4	75	58	Ø9-Ø14*9D	G1/4	32	21.5	45	29	61°	7.5
HMSA 63	155	187	111	32x32	19	15	Ø15	43	110	94	36	39	4	96	75	Ø11-Ø18*11D	G1/4	38	22	52	38	66°	2



A Clamp Port

B Unclamp Port

